

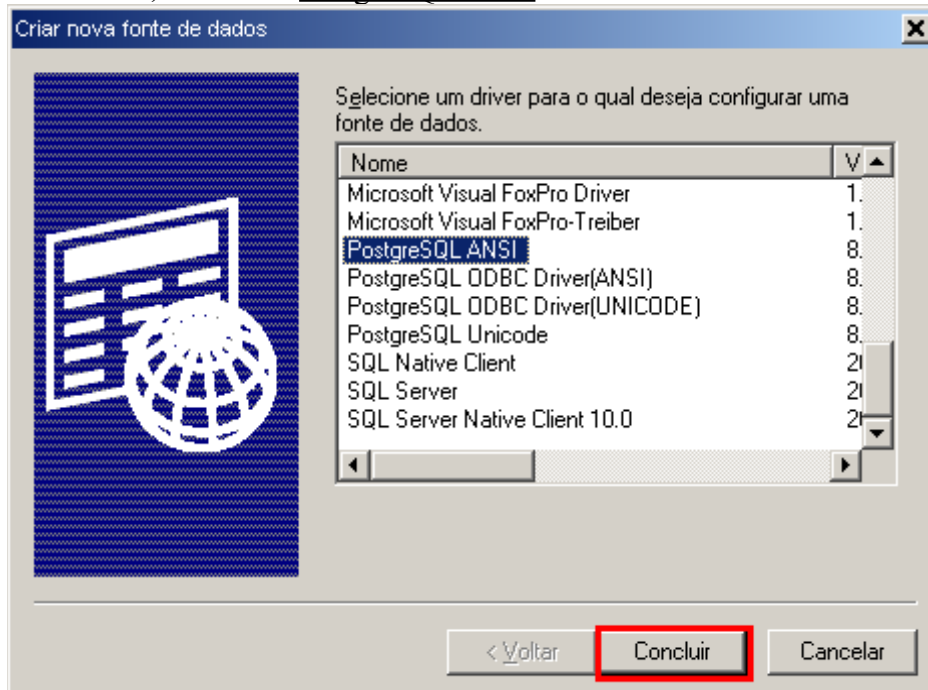
Configurando um Linked Server entre o SQL Server e o PostgreSQL

Configure uma fonte de dados ODBC:

Iniciar > Configurações > Painel de Controle > Ferramentas Administrativas > Fontes de Dados (ODBC)

Vá na guia: **Fonte de dados de sistema** e clique no botão *Adicionar...*

Escolha a fonte de dados, no caso o PostgreSQL ANSI



Informe os dados para acesso ao banco de dados do PostgreSQL, exemplo:



Clique no botão **Test** para testar a conexão, se der certo irá aparecer: Connection successful. Agora é só clicar no botão **Save** para concluir a configuração do ODBC.

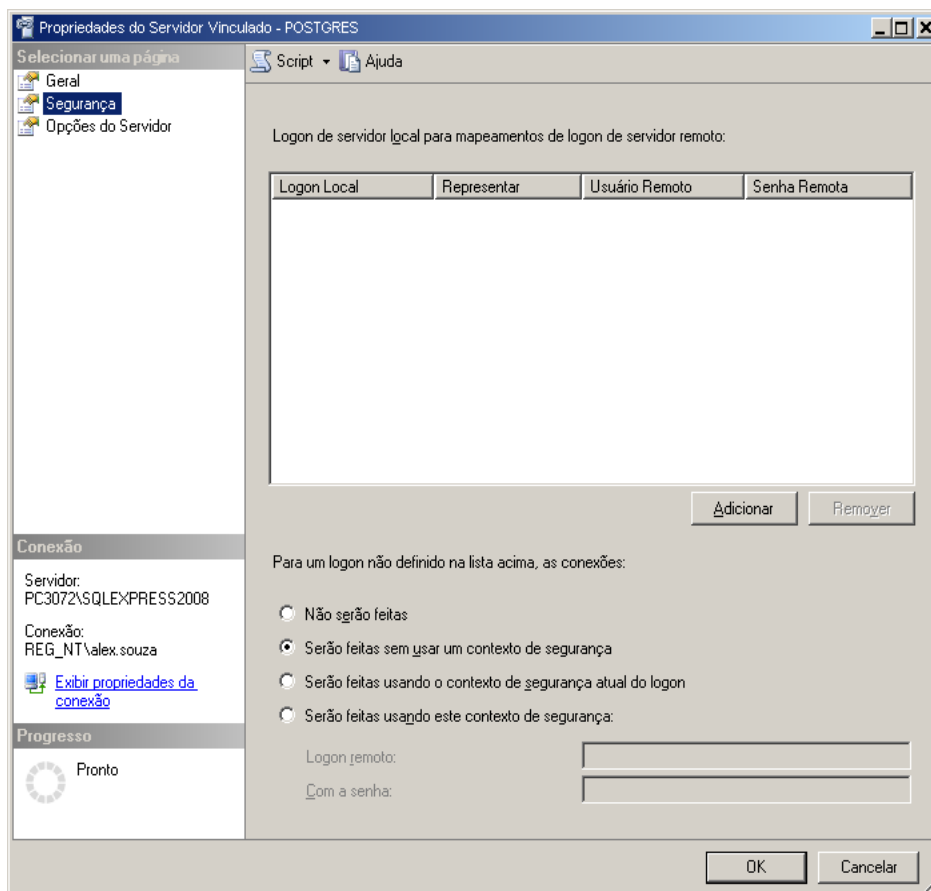
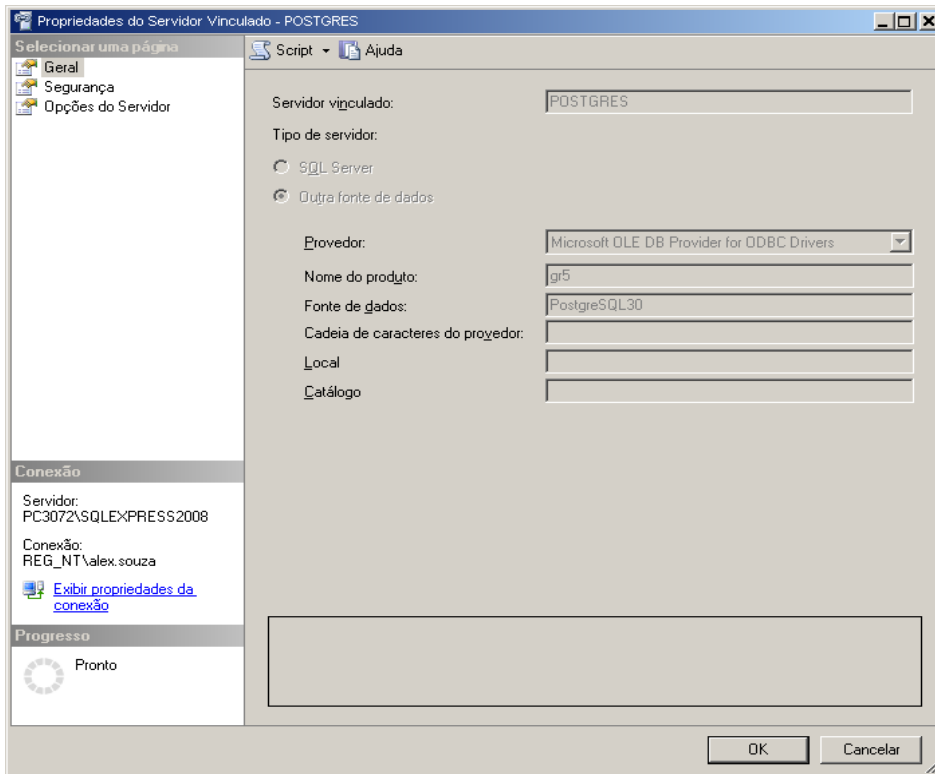
Criar um Linked Server no SQL Server (Via TSQL)

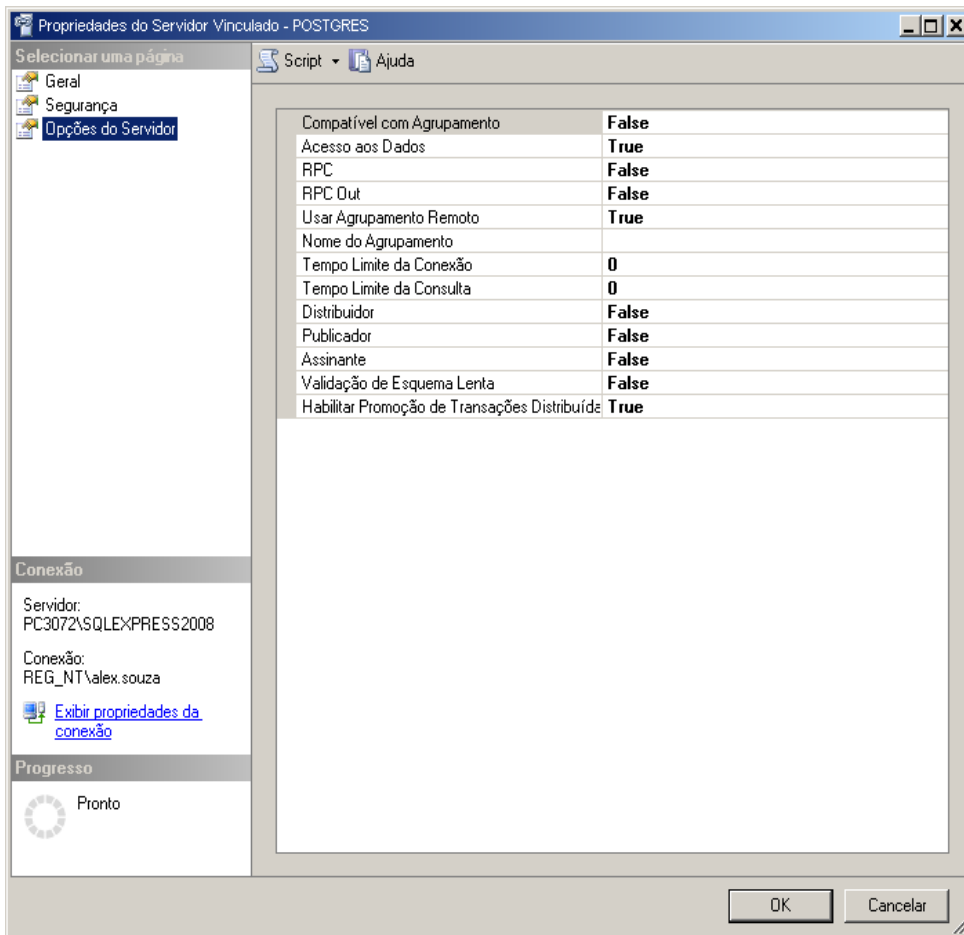
```
USE [master]
GO
EXEC master.dbo.sp_addlinkedserver @server = N'POSTGRES', @srvproduct=N'PostgreSQL,
@provider=N'MSDASQL', @datasrc=N'PostgreSQL30'
GO
EXEC master.dbo.sp_serveroption @server=N'POSTGRES', @optname=N'collation compatible',
@optvalue=N'false'
GO
EXEC master.dbo.sp_serveroption @server=N'POSTGRES', @optname=N'data access',
@optvalue=N'true'
GO
EXEC master.dbo.sp_serveroption @server=N'POSTGRES', @optname=N'rpc',
@optvalue=N'false'
GO
EXEC master.dbo.sp_serveroption @server=N'POSTGRES', @optname=N'rpc out',
@optvalue=N'false'
GO
EXEC master.dbo.sp_serveroption @server=N'POSTGRES', @optname=N'connect timeout',
@optvalue=N'0'
GO
EXEC master.dbo.sp_serveroption @server=N'POSTGRES', @optname=N'collation name',
@optvalue=null
GO
EXEC master.dbo.sp_serveroption @server=N'POSTGRES', @optname=N'query timeout',
@optvalue=N'0'
GO
EXEC master.dbo.sp_serveroption @server=N'POSTGRES', @optname=N'use remote collation',
@optvalue=N'true'
GO
USE [master]
GO
EXEC master.dbo.sp_addlinkedsrvlogin @rmtsrvname = N'POSTGRES', @locallogin = NULL ,
@useself = N'False'
GO
```

Criar um Linked Server no SQL Server (Via SSMS – Se preferir)

Instancia > Server Objects > Linked Servers

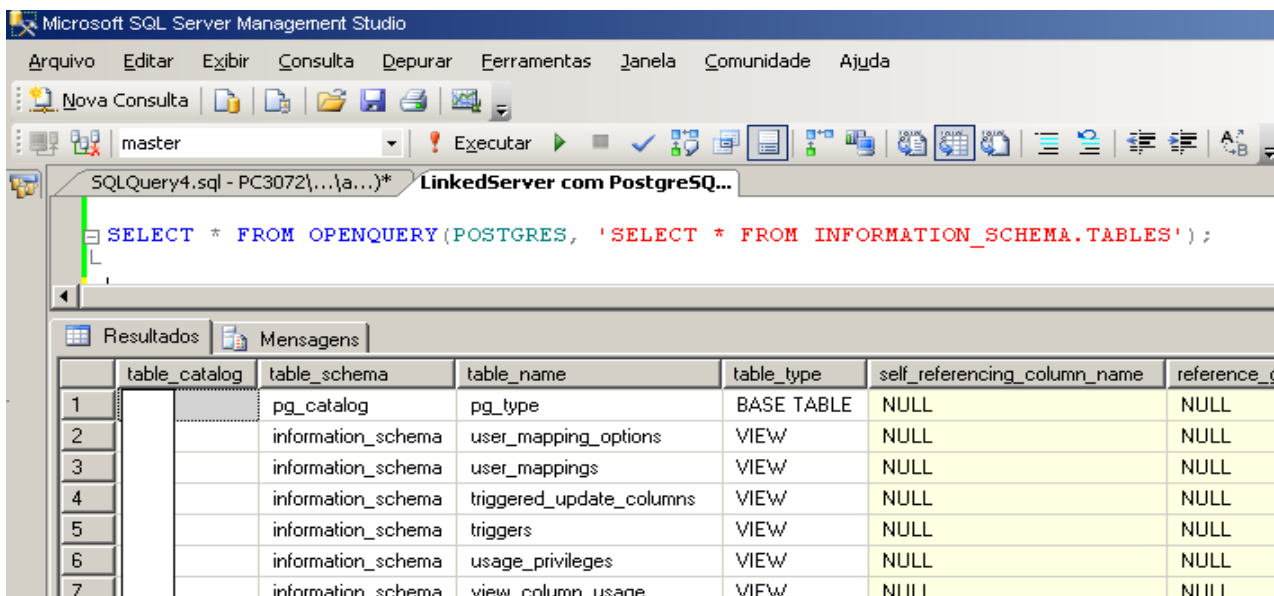
Clique com o botão direito do mouse em New Linked Server





Testes via TSQL no SSMS (SQL Server):

`SELECT * FROM OPENQUERY(POSTGRES, 'SELECT * FROM INFORMATION_SCHEMA.TABLES');`



`SELECT * FROM OPENQUERY(POSTGRES, 'SELECT * FROM public.contrato_conclusao');`
`SELECT * FROM OPENQUERY(POSTGRES, 'SELECT * FROM public.delegacia');`
`SELECT * FROM OPENQUERY(POSTGRES, 'SELECT * FROM public.pasta');`